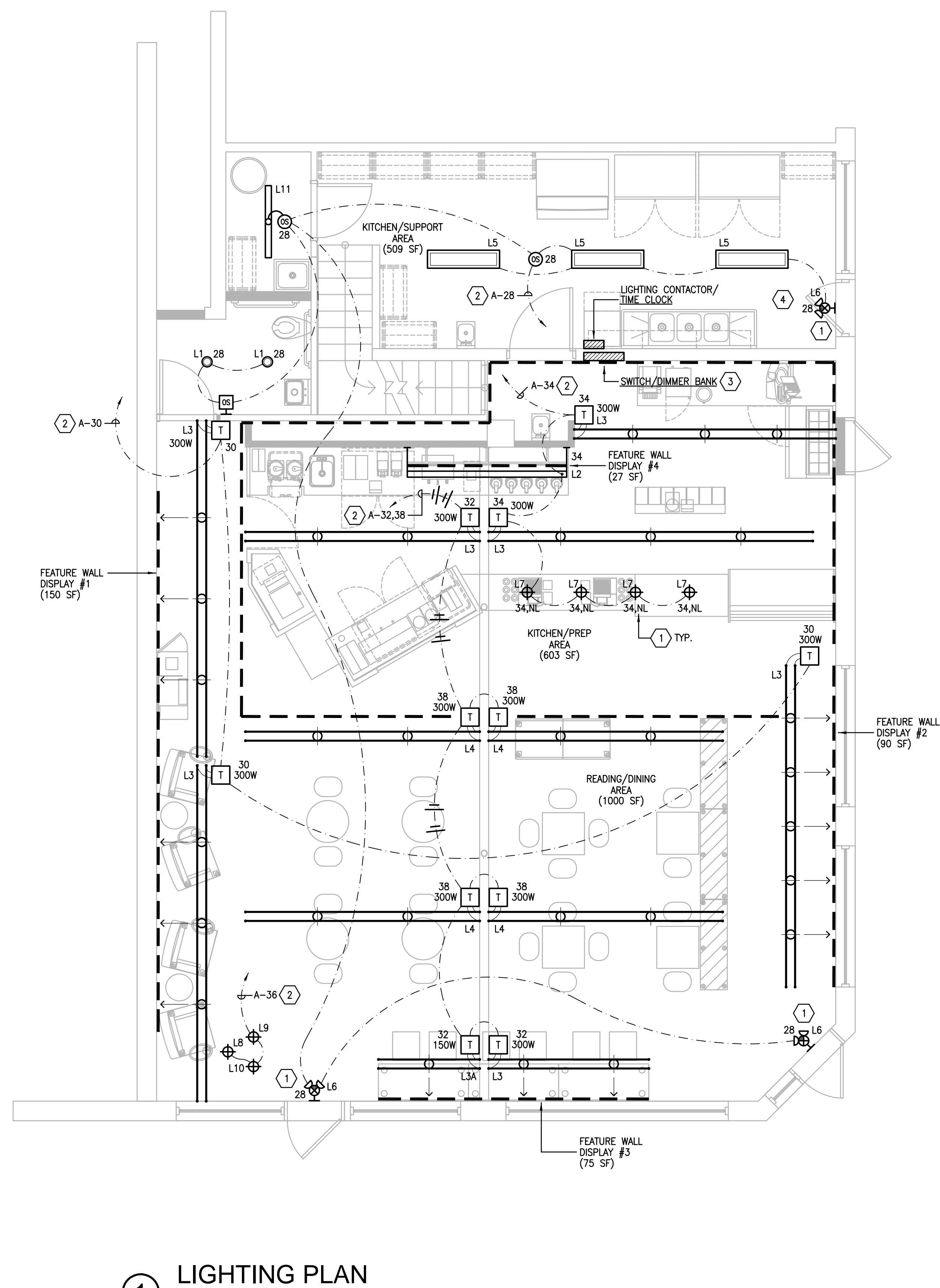


GENERAL NOTES

- ALL CONDUCTORS TO BE COPPER UNLESS OTHERWISE NOTED.
- NOTIFY THE DESIGNER & OWNER IMMEDIATELY UPON THE DISCOVERY OF ANY ITEM OR CONDITION THAT REQUIRES MODIFICATION TO THE LAYOUT OR CONNECTIONS OF DEVICES OR EQUIPMENT INDICATED ON THESE PLANS, PRIOR TO THEIR INSTALLATION.
- ALL ELECTRICAL EQUIPMENT OR DEVICES MOUNTED ON THE ROOF OR EXTERIOR TO THE BUILDING, SHALL BE SUITABLE FOR EXTERIOR USE IN DAMP OR WET LOCATIONS & LABELLED ACCORDINGLY.
- ALL CIRCUITS SHOWN CONNECTED TO BRANCH PANELS MUST ALSO CONTAIN A CODE REQUIRED GROUNDING CONDUCTOR.
- ALL ELECTRICAL CONNECTIONS SHALL BE MADE IN ACCORDANCE WITH THE FOLLOWING CODES:
2002 CALIFORNIA BUILDING CODE 2005 CALIFORNIA ENERGY CODE
2001 CALIFORNIA PLUMBING CODE 2004 CALIFORNIA ELECTRICAL CODE
2001 CALIFORNIA FIRE CODE 2002 NATIONAL ELECTRICAL CODE
2001 CALIFORNIA MECHANICAL CODE 2002 UNIFORM HOUSING CODE
- ALL WIRING SHALL BE INSTALLED IN APPROVED RACEWAYS.
- THE APPROVAL OF ALL ELECTRICAL WORK IS SUBJECT TO FIELD INSPECTIONS.
- ALTHOUGH NOT SHOWN FOR CLARITY, ALL RACEWAYS & HOMERUNS CONTAIN 2#12 AWG, UNLESS OTHERWISE NOTED ON PLANS.
- BRANCH CIRCUITS SHALL BE ROUTED TO EXISTING TENANT PANEL AS SHOWN ON SEPARATELY SUBMITTED ELECTRICAL DRAWINGS BY OTHERS. SPARE BREAKERS HAVE BEEN PROVIDED FOR USE BY THIS LIGHTING INSTALLATION.

SYMBOLS LEGEND

	SURFACE MOUNTED 1 X 4 FLUORESCENT FIXTURE
	SURFACE MOUNTED UTILITY FIXTURE
	EXIT SIGN WITH EMERGENCY HEADS
	LOW-VOLTAGE CABLE LIGHTING SYSTEM
	DECORATIVE PENDANT MOUNTED FIXTURE
	RECESSED FLUORESCENT DOWNLIGHT
	JUNCTION BOX; CEILING OR WALL MOUNTED
	OCCUPANCY SENSOR; CEILING MOUNTED
	OCCUPANCY SENSOR; WALL MOUNTED
	LOW-VOLTAGE TRANSFORMER
	WALL MOUNTED SINGLE TOGGLE SWITCH
	FIXTURE TYPE TAG
	PANEL & CIRCUIT TAG
	SHEET NOTE TAG
	AMPS
	AIR CONDITIONER
	ABOVE FINISHED FLOOR
	ARC FAULT INTERRUPTER
	ALUMINUM
	CONDUIT
	CABLE TELEVISION
	CIRCUIT BREAKER
	COMMERCIAL
	GARBAGE DISPOSER
	EXISTING
	FAN
	FORCED AIR UNIT
	GROUND FAULT INTERRUPTER
	ELECTRICAL
	GROUND
	MAIN CIRCUIT BREAKER
	MAIN LUGS ONLY
	NEW
	POLES
	PHASE
	PANEL
	POLY VINYL CHLORIDE PIPE
	REFRIGERATOR
	RESIDENTIAL
	SWITCHBOARD
	TYPICAL
	UNLESS OTHERWISE NOTED
	VOLTS
	WATTS
	WATER HEATER
	WEATHERPROOF



FIXTURE SCHEDULE

TYPE L1	(1) 26W	LIGHTOLIER RECESSED FLUORESCENT DOWNLIGHT
TYPE L2	(3) F25T8	ELLIPTIPAR LINEAR MENU FIXTURE
TYPE L3	(1) 50W MR16 (24V)	TECH LIGHTING KABLE WITH HEADS (TO BE DETERMINED) 300W XFMR.
TYPE L3A	(1) 50W MR16 (24V)	TECH LIGHTING KABLE WITH HEADS (TO BE DETERMINED) 150W XFMR.
TYPE L4	(2) 20W MR16 (24V)	TECH LIGHTING KABLE WITH HEADS (TO BE DETERMINED) 300W XFMR.
TYPE L5	(2) F32T8	LITHONIA (OR EQUAL) 1' X 4' SURFACE FLUORESCENT TROFFER
TYPE L6	(2) 7W PAR	COMBINATION EXIT SIGN / EMERGENCY EGRESS HEADS
TYPE L7	(1) 100W	TECH LIGHTING PENDANT MOUNTED "METEOR"
TYPE L8	(1) 150W	GEORGE NELSON PENDANT MOUNTED "PEAR"
TYPE L9	(1) 150W	GEORGE NELSON PENDANT MOUNTED "CIGAR"
TYPE L10	(1) 150W	GEORGE NELSON PENDANT MOUNTED "BALL"
TYPE L11	(1) F32T8	LITHONIA (OR EQUAL) SURFACE FLUORESCENT WRAP

SWITCH/DIMMER BANK SCHEDULE

SWITCH	CIRCUIT	LOAD DESCRIPTION	TYPE
1	A-28	SUPPORT AREA & EXIT SIGNS	LOCAL SWITCHING
2	A-30	FEATURE WALL DISPLAY #1 - CABLE	DIMMER
3	A-30	FEATURE WALL DISPLAY #2 - CABLE	DIMMER
4	A-34	FOOD PREP AREA - CABLE	DIMMER
5	A-32	ESPRESSO AREA - CABLE	DIMMER
6	A-34	COUNTER AREA - PENDANTS	DIMMER
7	A-34	FEATURE WALL DISPLAY #4 - LINEAR	SWITCHED
8	A-38	READING/DINING AREA - CABLE	DIMMER
9	A-32	FEATURE WALL DISPLAY #3 - CABLE	DIMMER
10	A-36	DECORATIVE PENDANTS	DIMMER

SHEET NOTES

- PROVIDE UNSWITCHED CIRCUIT LEG TO EXIT & NIGHT LIGHT (NL) FIXTURES.
- ROUTE ALL HOMERUNS THROUGH SWITCH/DIMMER BANK.
- PROVIDE & INSTALL SWITCH/DIMMER BANK MOUNTED AT 48" AFF TO CENTER OF DEVICES. SEE SCHEDULE THIS SHEET.
- PROVIDE & INSTALL DIGITAL TIME CLOCK WITH MANUAL OVERRIDE; INTERMATIC OR EQUAL. PROVIDE & INSTALL 8 POLE CONTACTOR WITH 120V COIL, MECHANICALLY HELD; SQUARE-D OR EQUAL.

1 LIGHTING PLAN
SCALE: 1/4" = 1'-0"

REVISIONS

NO.	DESCRIPTION	DATE
1	ISSUED FOR PERMIT	03.19.07
1	REVIEW COMMENTS	04.02.07
2	FIELD INSPECTION	05.04.07

PROJECT

Java City

18th & Capitol
Sacramento, California

Lighting Plan

Ownership and Use of Documents:

All Drawings, Specifications, Documents, and the ideas and designs incorporated herein, and copies thereof furnished by Jacob Moss s.b.a., JACOB MOSS, INC. are and shall remain the property of JACOB MOSS, INC. They are to be used only with respect to this project and shall not be used in whole or in part by any persons on other projects, or extensions to this project without expressed written agreement with JACOB MOSS, INC. The Drawings and Documents are protected by the Copyright Law "Work of the Visual Arts", Register of Copyrights, Library of Congress, Washington, DC 20559.

DATE	03.08.07
SCALE	AS NOTED
JOB NO.	0703.10

SHEET NO.

E1.0