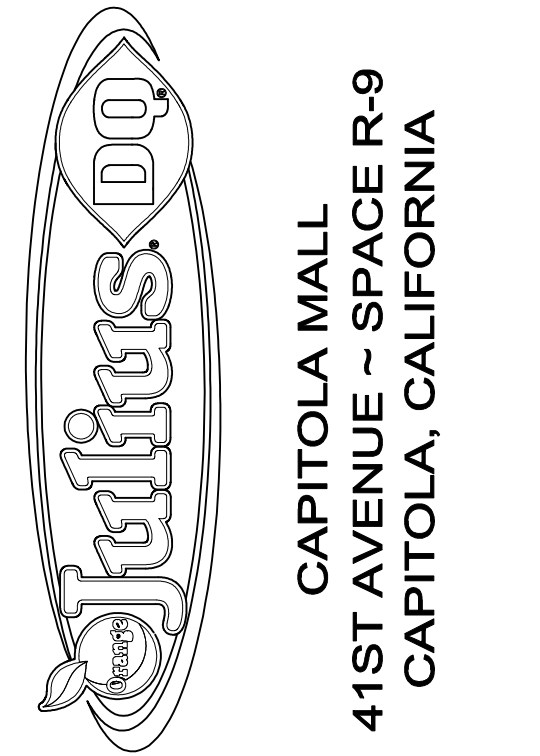


Ownership and Use of Documents:
All Drawings, Specifications, Documents, and the ideas and designs incorporated herein, and copies thereof furnished by T.P. WATERS CO. are and shall remain the Property of T.P. WATERS CO. They are to be used only with respect to this project and shall not be used in whole or in part by any persons on other projects, or extensions to this project without expressed written agreement with T.P. WATERS CO. The Drawings and Documents are protected by the Copyright Law "Work of the Visual Arts" Register of Copyrights, Library of Congress, Washington DC 20559. Copyright © 2004.

REVISIONS

NO.	DESCRIPTION	DATE
1	ISSUED FOR PERMIT	06.14.04
2	IDQ BACKCHECK	06.18.04
3	CAPITOLA BACKCHECK	07.19.04
4	AS-BUILT RECORD SET	03.24.05

PROJECT



SHEET TITLE

POWER AND LIGHTING PLANS

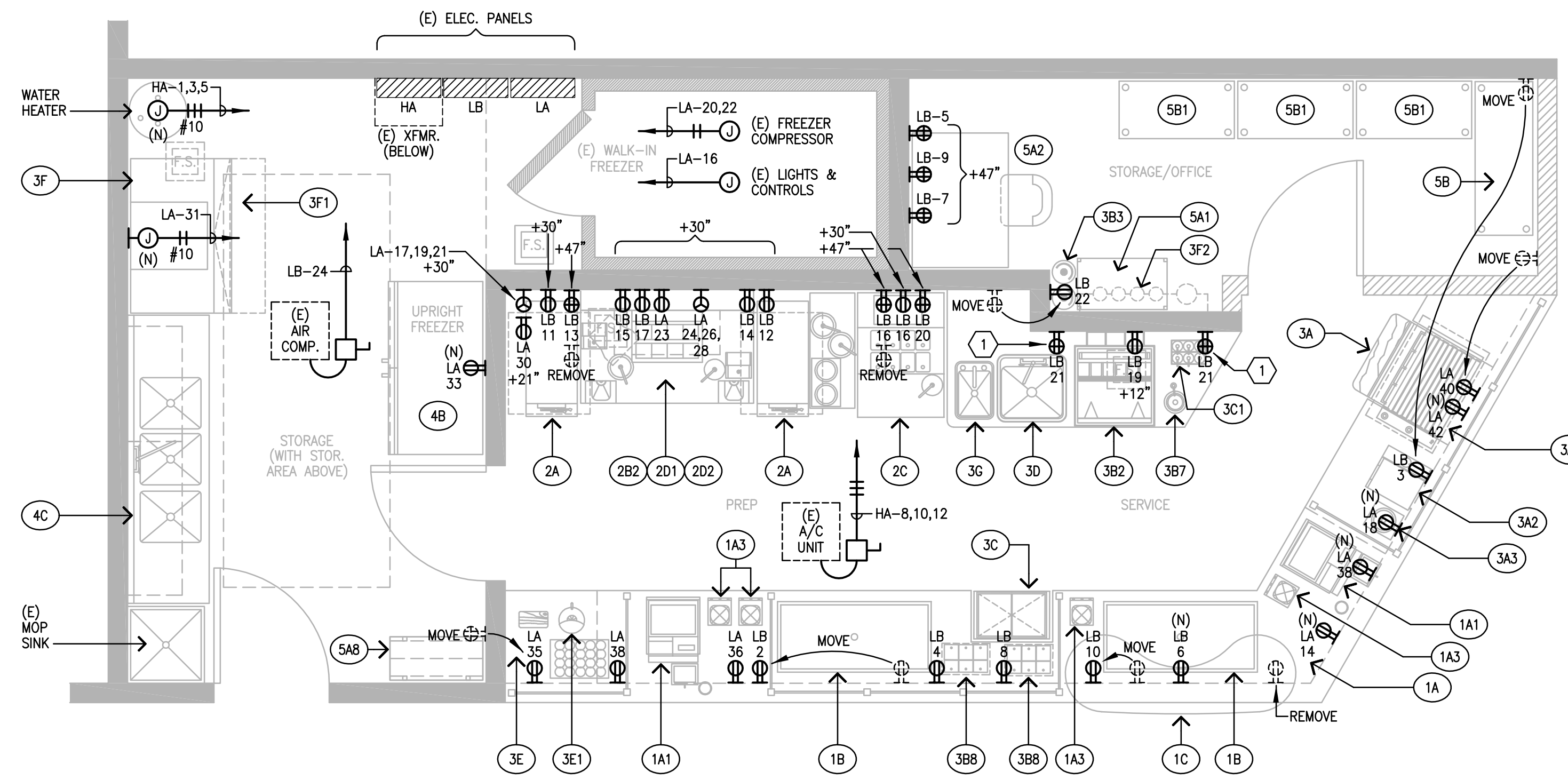
DATE 03.30.04

SCALE AS NOTED

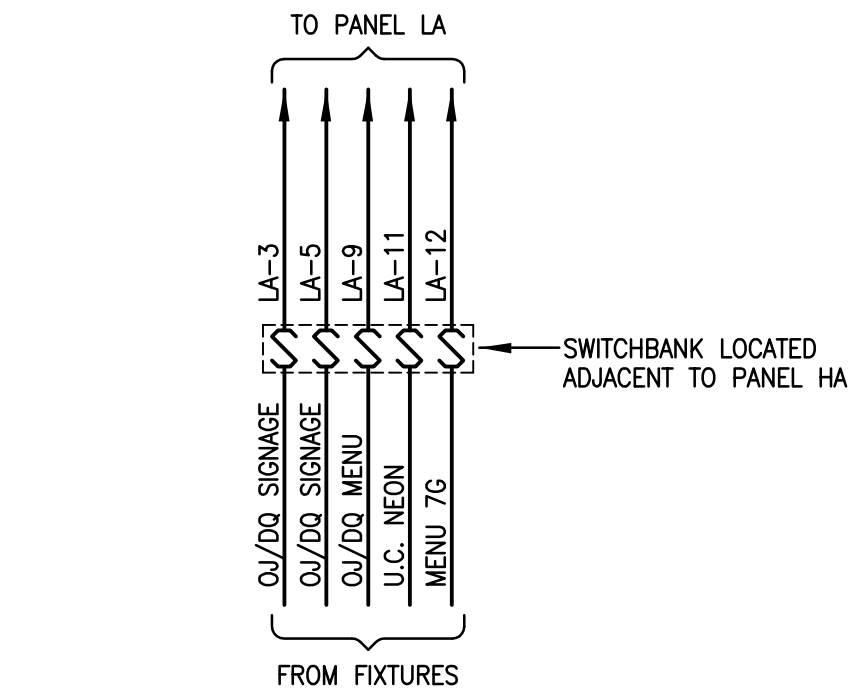
JOB NO. 0403.21

SHEET NO.

E2



NOTE: ALL RECEPTACLES ARE EXISTING TO REMAIN UNLESS OTHERWISE NOTED.

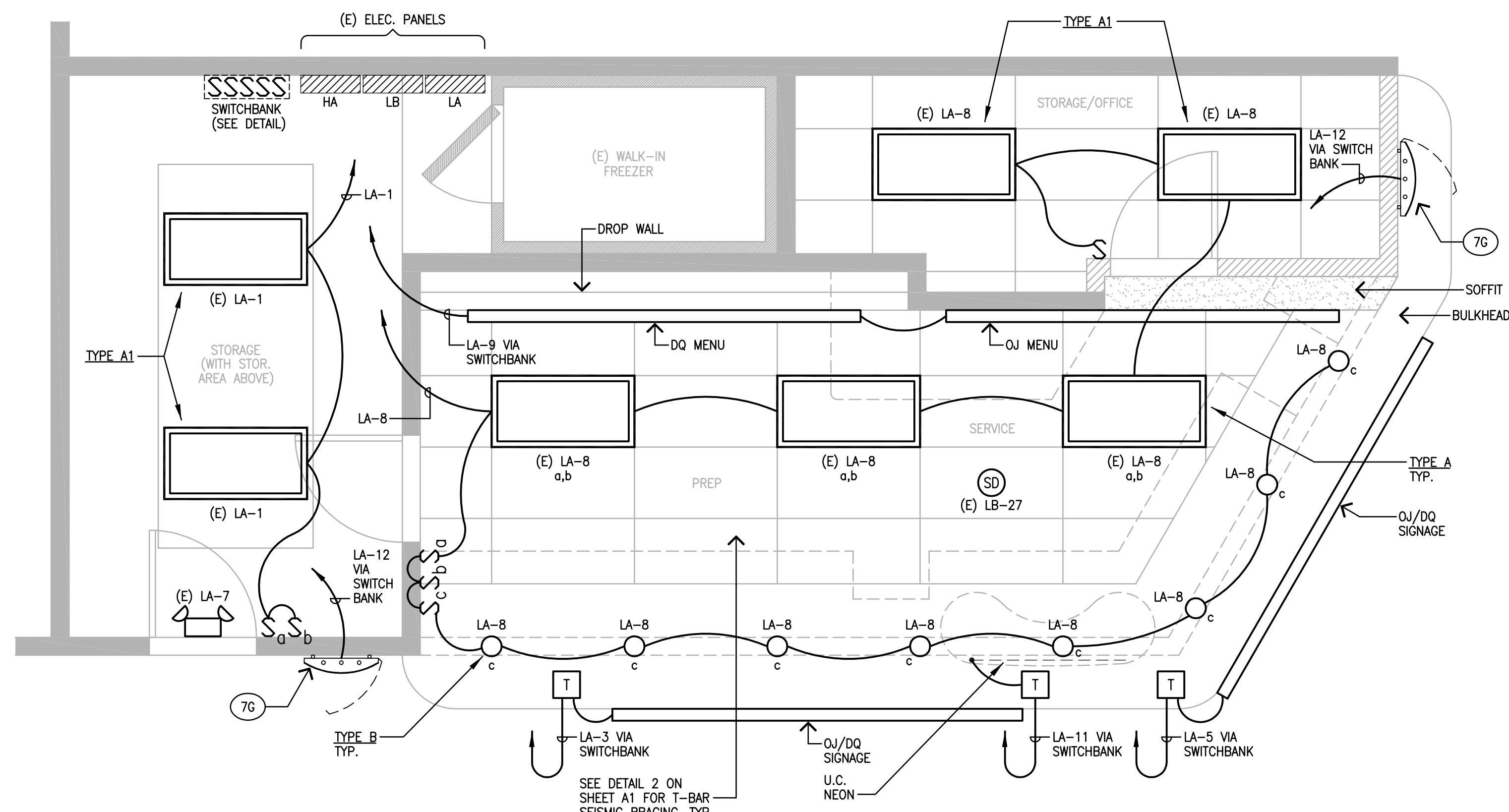


3 SWITCHBANK DETAIL
SCALE: NONE

SHEET NOTES

1 EXISTING RECEPTACLE MOUNTED AT +47" TO BE LOWERED TO BELOW COUNTER HEIGHT. COORDINATE EXACT MOUNTING HEIGHT IN FIELD WITH OWNER.

1 POWER PLAN
SCALE: 3/8" = 1'-0"



2 LIGHTING PLAN
SCALE: 3/8" = 1'-0"

EQUIPMENT SCHEDULE

QTY	No.	Item
1	1A	FRONT COUNTER
2	1A1	CASH REGISTER
4	1A3	BLENDER
2	1B	MECHANICAL COLD PAN
1	1C	POUR COUNTER
2	2A	SOFT SERVE FREEZER
2	2B2	BLIZZARD MACHINE
1	2C	MINI TOPPING FREEZER
1	2D1	CONE DIP
2	2D2	FUDGE PUMP
1	3A	SANDWICH PREP TABLE
1	3A1	50 HOTDOG WARMER, MOUNTED ABOVE
1	3A2	FLASH STEAMER
1	3A3	SINGLE FOOD WARMER
1	3B2	DRINK HEAD / ICE BIN
2	3B3	CARBONATOR
1	3B7	DIP WELL
2	3B8	OJ POWDER CONTAINER SHELF
1	3C	YOGURT DIPPING CABINET
1	3C1	RHINO BOOSTERS
1	3D	POT SINK
1	3E	JUICE COUNTER
1	3E1	JUICER
1	3F	ICE FLAKER
1	3F1	ICE BIN
1	3F2	FILTER SYSTEM
1	3G	HAND SINK
1	4B	DOUBLE DR. FREEZER OR REFRIG.
1	4C	SCRUB SINK
1	5A1	BAG-N-BOX
1	5A2	DESK AND CHAIR
1	5A8	CAN RACK ASSEMBLY
1	5B	18" X 4' SHELVING ASSEMBLY
3	5B1	18" X 3' SHELVING ASSEMBLY
2	7G	MENU ASSEMBLY (3 PANEL)