

Revisions		
No.	Description	Date
1	ISSUED FOR PERMIT	08.24.07
△	FUELING COORD.	10.17.07

**Gas Station & Convenience Store**  
**Parm Bassi**  
Commercial Development  
4856 Old Redwood Highway  
Santa Rosa, CA 95403

Sheet Title:

**First & Second Floor Power & Signal Plans**

Date: 08.24.07

Scale: AS NOTED

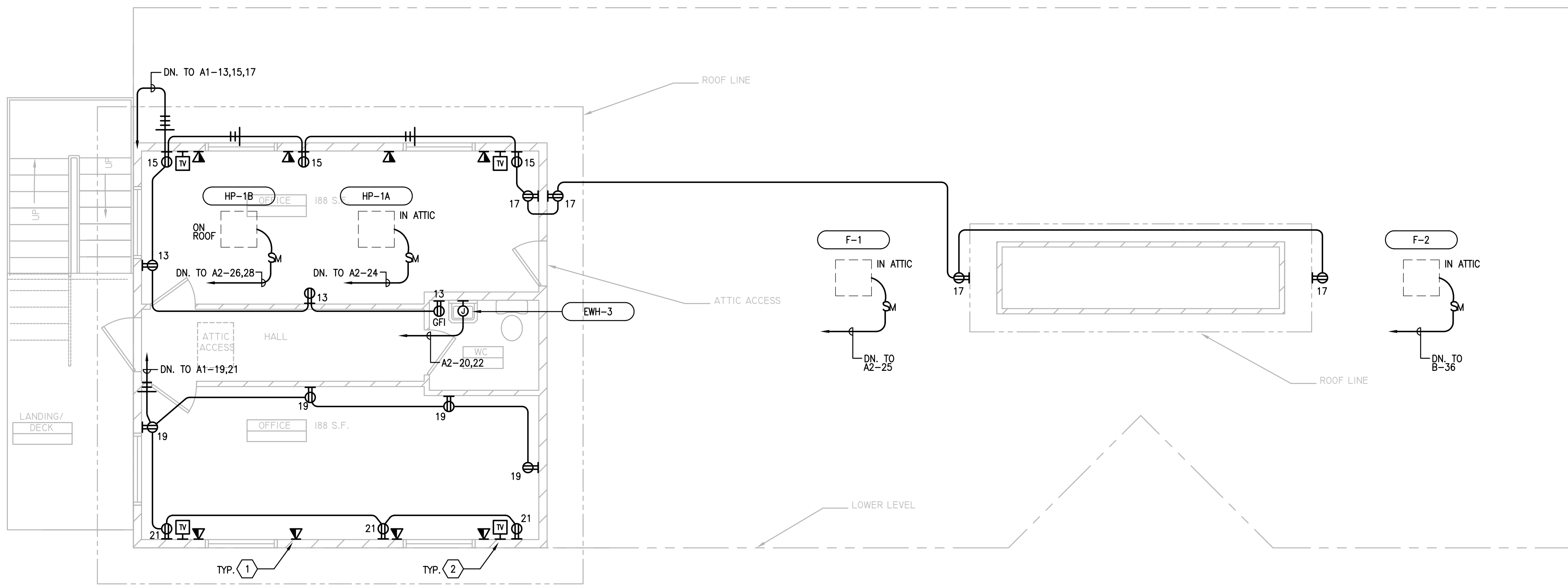
Project No.: 0708.02

Sheet No.:

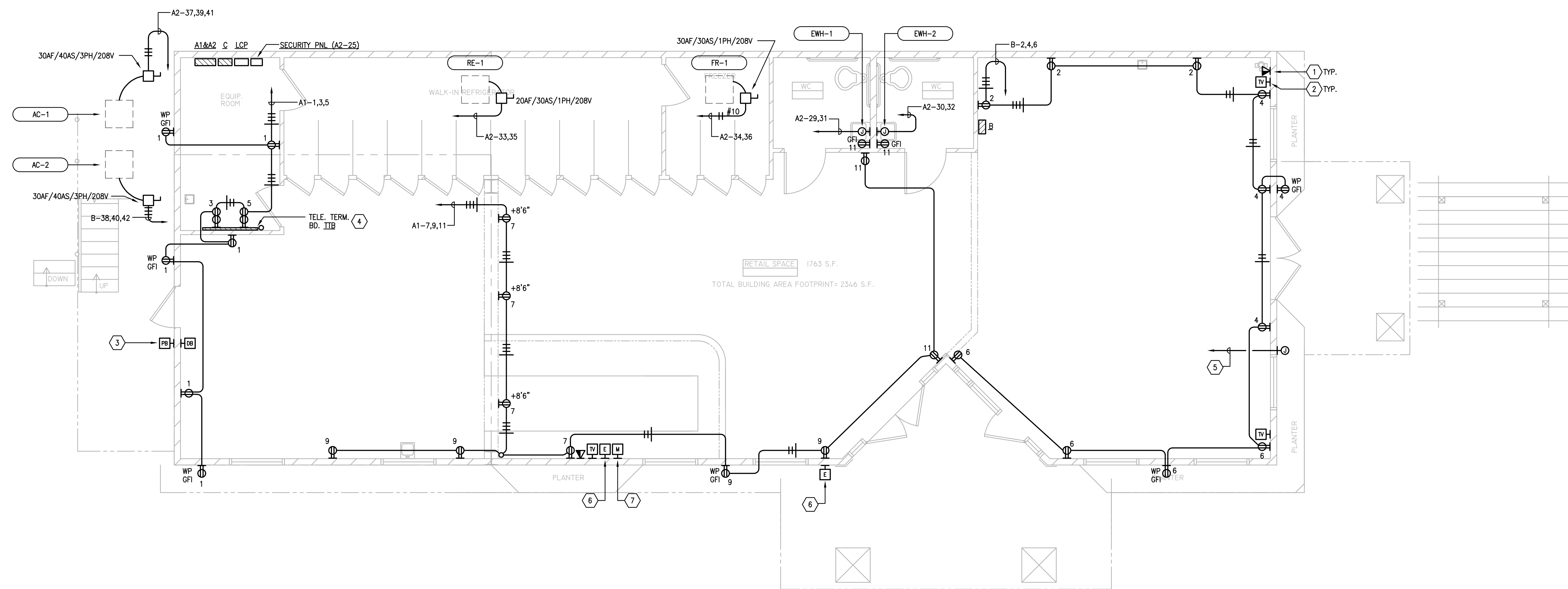
**E2.0**

**SHEET NOTES**

- 1 TELE/DATA OUTLET; PROVIDE & INSTALL SINGLE GANG RING WITH NYLON PULL LINE UP INTO ATTIC SPACE FOR CABLE INSTALLATION BY OTHERS.
- 2 CABLE TV OUTLET; PROVIDE & INSTALL SINGLE GANG RING WITH NYLON PULL LINE UP INTO ATTIC SPACE FOR CABLE INSTALLATION BY OTHERS.
- 3 WEATHERPROOF PUSHBUTTON SWITCH TO OPERATE DOORBELL; WITH WALL MOUNTED DOORBELL/CHIME AS LOCATED BY ARCHITECT; NUTONE OR EQUAL.
- 4 TELEPHONE TERMINAL BOARD - TTB; 3/4"x4"x8" FIRE TREATED PLYWOOD; MOUNT HORIZONTALLY WITH BOTTOM AT 24" AFF.
- 5 PROVIDE & INSTALL EMPTY 3/4"C. WITH PULL LINE, TERMINATING AT PANEL C LOCATION FOR POSSIBLE POWER REQUIREMENTS.
- 6 EMERGENCY SHUT-OFF SWITCH; PROVIDE & INSTALL SINGLE GANG, RED MUSHROOM BUTTON (SQ-D OR EQUAL) @ +48" ABOVE FIN. GRADE; PUSH TO ENGAGE, PULL TO RESET; LABELLED "EMERGENCY FUEL SHUT-OFF".
- 7 LEAK DETECTION MONITOR; PROVIDED & INSTALLED BY FUELING CONTRACTOR; SEE SHEET E4.0 FOR CONNECTIONS @ TANKS.



**2 SECOND FLOOR POWER & SIGNAL PLAN**  
SCALE: 1/4" = 1'-0"



**1 FIRST FLOOR POWER & SIGNAL PLAN**  
SCALE: 1/4" = 1'-0"